

ATMOSPHERIC EFFECTS IN THE THREE-SPACE SCENARIO FOR THE STOKES-HELMERT METHOD OF GEOID DETERMINATION

Huaining Yang¹, Robert Tenzer¹, Petr Vaníček¹, Marcelo Santos¹

¹ Department of Geodesy and Geomatics Engineering, University of New Brunswick, P.O. Box 4400, Fredericton, New Brunswick, Canada, E3B 5A3; Tel.: +1 506 458 7501; Fax.: +1 506 453 4943
l574t@unb.ca

1. Introduction

Transforming the gravity anomalies from the real space into the NT-space (it is the space obtained after disregarding the external (topographical and atmospheric) masses above the geoid, i.e. No Topography space, which is also called Bouguer space), the effect of atmospheric masses on the gravitational attraction must be evaluated. This total effect consists of the direct atmospheric effect and the secondary indirect atmospheric effect.

After obtaining the NT-anomalies at the geoid surface, they are further transformed from the NT-space into the H-space. The effect of condensed atmospheric masses on the gravitational attraction must be then evaluated. By analogy with the effect of atmospheric masses, the total effect of condensed atmospheric masses consists of the direct condensed atmospheric effect and the secondary indirect atmospheric effect. The programs included in the UNB geoid software package have been used for the computation.

2. Numerical realization of each of these four effects

For the numerical integration of each of computation of these effects, the 30x30 minutes step of DTM for the inner-zone integration sub-domain was chosen while for the middle and far-zone contributions, the 5x5 minutes and 1x1 degree of the mean height data have been used to model the topography.

3. Transformation from real space into NT-space

As mentioned in the Introduction, the direct atmospheric effect and the secondary indirect atmospheric effect on the gravitational attraction are computed to obtain the NT-anomalies from the actual gravity anomalies. Both effects are referred to the earth surface.

3.1 Direct atmospheric effect

The direct atmospheric effect is defined as the gravitational attraction of atmospheric masses evaluated at the earth surface. It is described by the Newton volume integral, where the integration is employed over the entire earth atmosphere. We choose the upper limit of the atmosphere to be 50 km above the sea surface. We split the atmosphere into the atmospheric spherical shell from the height 9 km up to 50 km, and the atmospheric spherical roughness term between the topography and the bottom limit of atmospheric shell, i.e., the mean sea level. Since the gravitational attraction of the spherical atmospheric shell at the interior is equal to zero (Mac Millan, 1930), during the process of computation of the direct atmospheric effect only over the (spherical) roughness the numerical integration is employed. The result of the numerical integration is shown in Figure 1. As follows from the result, the gravitational attraction of atmospheric masses is small. Over Canada it varies from approximately 0 mGal (ocean) to -0.18 mGal (mountains), with a mean value of -0.02mGal. Hence, this effect would be systematically negative and since it reaches more than 0.01 mGal (in absolute value), it must be taken into account if the 1cm accuracy is the aim (Vanicek and Martinec, 1994).

3.2 Secondary indirect atmospheric effect

The secondary indirect atmospheric effect is defined as the atmospheric potential multiplied by $2/r$, where r is the geocentric radius of the earth surface at the computation point. The result is shown in Figure 2. At

the computation area of Canada this effect varies between 1.68 mGal and 1.80 mGal with a mean value of 1.77mGal.

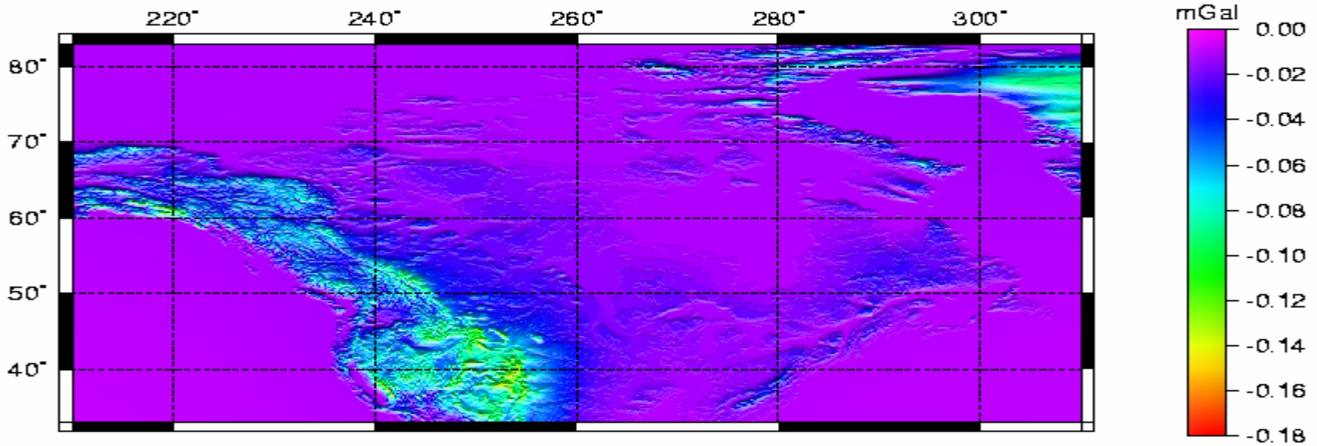


Figure 1. Direct atmospheric effect.

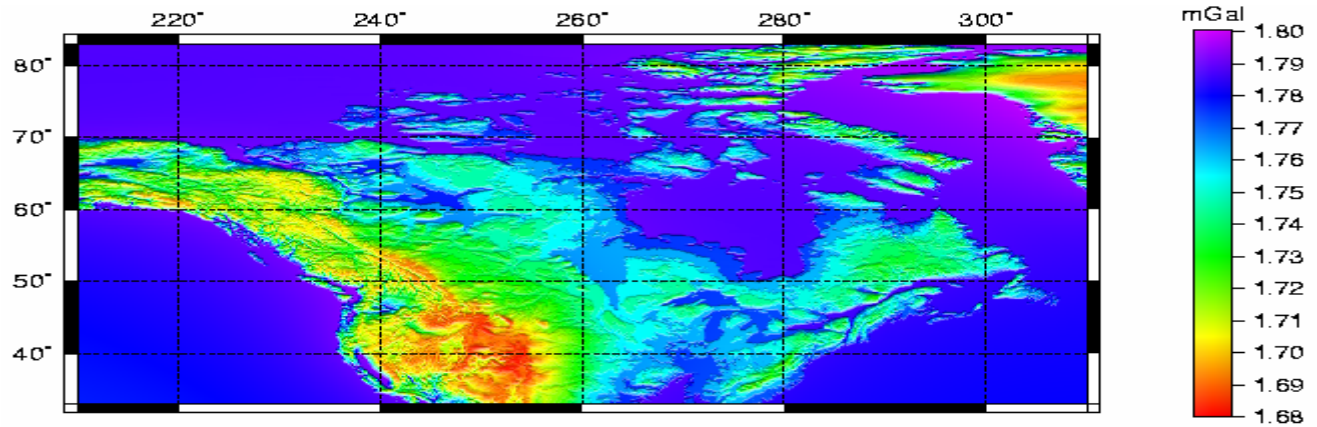


Figure 2. Secondary indirect atmospheric effect.

4. Transformation from the NT-space into H-space

In this part of the geoid computation, the direct condensed atmospheric effect and the secondary indirect condensed atmospheric effect on the gravitational attraction are computed to obtain the H-anomalies from the NT-anomalies. The computation is realized directly at the geoid surface, because the vertical displacement between the Helmert co-geoid and the geoid is negligible in this context.

4.1 Direct condensed atmospheric effect

The direct condensed atmospheric effect is defined as the gravitational attraction generated by the condensed atmospheric masses. As follows from the result shown in Figure 3, the direct condensed atmospheric effect ranges from -0.84 mGal over the ocean to -0.64 mGal at the area of the Canadian Rocky Mountains, with a mean value of -0.82mGal.

The significant difference between the direct and the condensed atmospheric effects can be seen. For the computation of the direct condensed atmospheric effect the contribution to the atmospheric spherical shell must be considered. The density of the condensed atmospheric spherical shell is equal to a constant.

4.2 Secondary indirect condensed atmospheric effect

The secondary indirect effect of the condensed atmospheric masses on the gravitational attraction is defined as the gravitational potential of condensed atmospheric masses multiplied by the $2/R$, where R is the mean radius of the earth which approximates the geocentric radius of the geoid. As follows from the

result of our computation over Canada (Figure 4), this effect ranges between 0.71 mGal and 1.39 mGal, with a mean value of 0.81mGal.

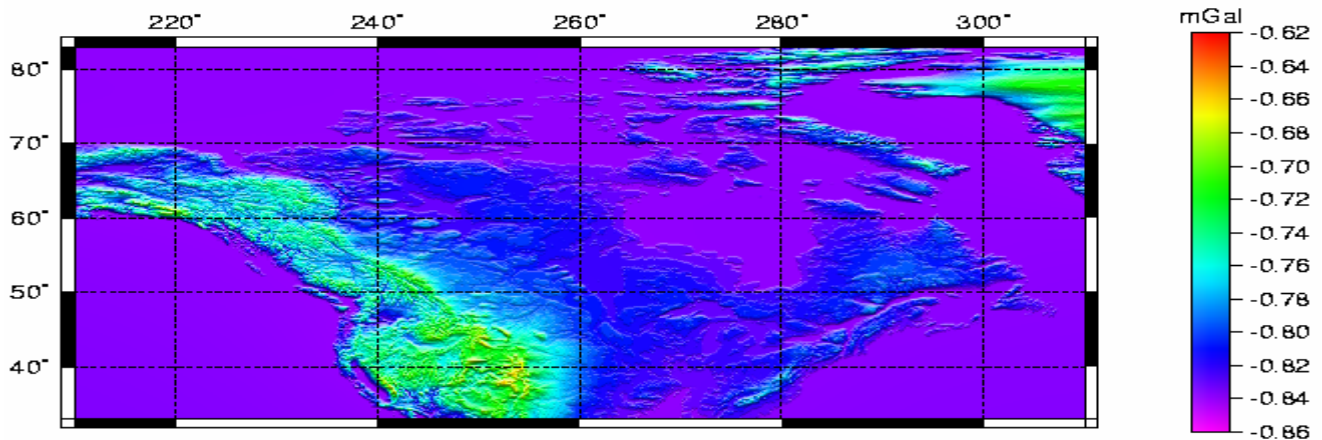


Figure 3. Direct condensed atmospheric effect.

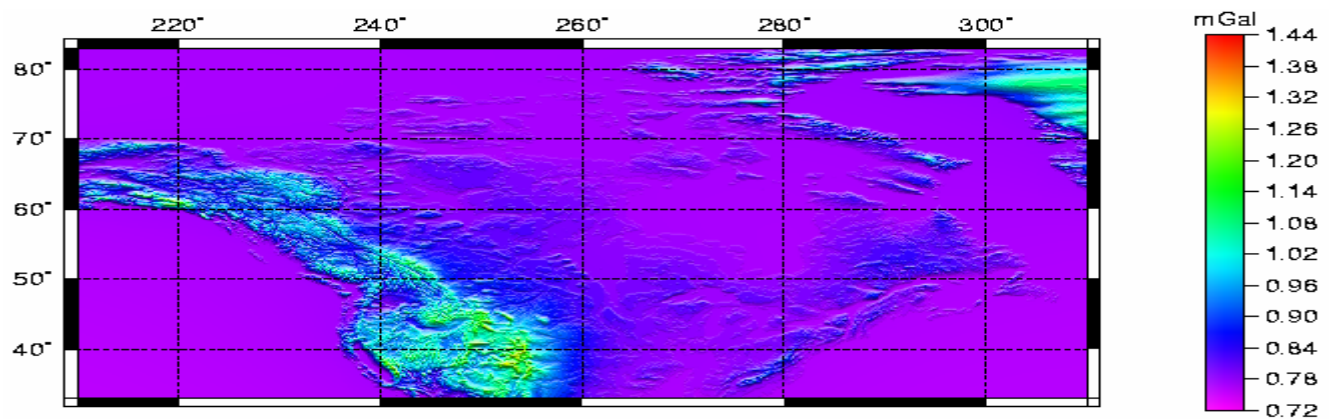


Figure 4. Secondary indirect condensed atmospheric effect.

5. Conclusions

Summarizing the result of our numerical investigation over Canada, it follows that the direct atmospheric effect is much smaller than the direct condensed atmospheric effect. Moreover, the secondary indirect effect of atmospheric masses and the secondary indirect effect of condensed atmospheric masses are similar but the differences (a few miligals) are not negligible.

The secondary indirect (atmospheric and condensed atmospheric) effects have a low-frequency character while the direct effects contain also the high-frequency part. Especially the direct atmospheric effect is strongly related to the topography, where over the ocean it is almost negligible while at the Canadian Rocky mountains reaches up to 180 μ Gal.

Based on our numerical investigation of all the effects caused by atmospheric and condensed atmospheric masses, the 30x30 second DTM data are sufficient for the near-zone numerical integration up to 5 minutes of the spherical distance around the computation point, 5x5 minutes DTM for the middle-zone up to 3 degree of the spherical distance, and 1x1 degree mean heights for the far-zone integration sub-domain.

Acknowledgements. The author that the research described here was conducted under auspices of the “GEOIDE Network of Centres of Excellence”.

References:

Mac Millan W.D., 1930: The theory of the potential, Dover, New York.

Novák P., 2000: Evaluation of gravity data for the Stokes-Helmert solution to the geodetic boundary-value problem. Technical report, No. 207, UNB, Fredericton.

Sjöberg L.E., 1998: The atmospheric geoid and gravity corrections. *Bolletino di Geodesia e Scienze Affini*, 57.

Sjöberg L.E., 1999: The IAG approach to the atmospheric geoid correction in Stokes' formula and a new strategy. *Journal of Geodesy*, Vol. 73, Springer.

Tenzer R., Novák P., Janák J., Huang J., Najafi M., Vajda P., Santos M., 2003: A review of the UNB approach for precise geoid determination based on the Stokes-Helmert method. Honouring the academic life of Petr Vaníček, M. Santos (Ed.), Department of Geodesy and Geomatics Engineering, Technical Report No. 218, Fredericton, pp. 132-178.

Tenzer R., Vaníček P., 2003: New Result for UNB Geoid. Annual scientific meeting, Canadian Geophysical Union, May 10 - 14, 2003, Banff, Canada.

United States Standard Atmosphere (1976). Joint model of the National Oceanic and Atmospheric Administration, National Aeronautics and Space Administration, and United States Air Force, Washington, D. C.

Vaníček P., Martinec Z., 1994: The Stokes-Helmert scheme for the evaluation of a precise geoid. *Manuscripta Geodaetica*, No. 19, Springer, pp. 119-128.

Vaníček P., Huang J., Novák P., Pagiatakis S.D., Véronneau M., Martinec Z., Featherstone W.E., 1999: Determination of the boundary values for the Stokes-Helmert problem. *Journal of Geodesy*, Vol. 73, Springer, pp. 180-192.

Vaníček P., Tenzer R., Huang J., 2003: The role of No Topography space in the Stokes-Helmert technique for geoid determination. Annual scientific meeting, Canadian Geophysical Union, May 10 - 14, 2003, Banff, Canada. (oral presentation)

Vaníček P., Tenzer R., Sjöberg L.E., Martinec Z., Featherstone E.W., 2004: New views of the spherical Bouguer gravity anomaly. *Journal of Geophysics International*. (submitted)